

TRAFFIC PATTERN AIRSPACE (MKC)

TRAFFIC PATTERN INFORMATION

- Left traffic pattern for Runway 1-19
- Left traffic pattern for Runway 21
- Right traffic pattern for Runway 3
- When departing Runway 3, attain TPA prior to turning crosswind.
- When landing to Runway 21, maintain TPA until passing north of Missouri River.
- Multiple obstructions 0.5-1.0-mile ESE from departure end of Runway 19 up to 1100' MSL (290' AGL).
- Avoid overflight of River Market and Downtown buildings/structures.
- Be aware of tall communication towers 3-miles south of departure end of Runway 19, 3,000' east of centerline.
- Light aircraft to follow I-70 corridor between Downtown and River Market for crosswind leg of traffic pattern (unless otherwise directed by ATCT).

LOCATION

FAA Identification: MKC
Lat/Long: 39° 07'-23.70" N/94° 35' 33.90" W
Field Elevation: 757' MSL
Runway 1-19: 6,827' x 150'
Runway 3-21: 5,050' x 100'

TRAFFIC PATTERN ALTITUDES

- Light Aircraft (A&B) – 1,800' MSL (1,000' AGL)
- Multi-engine/Jet Aircraft (C&D) – 2,300' MSL (1,500 AGL)

COMMUNICATIONS

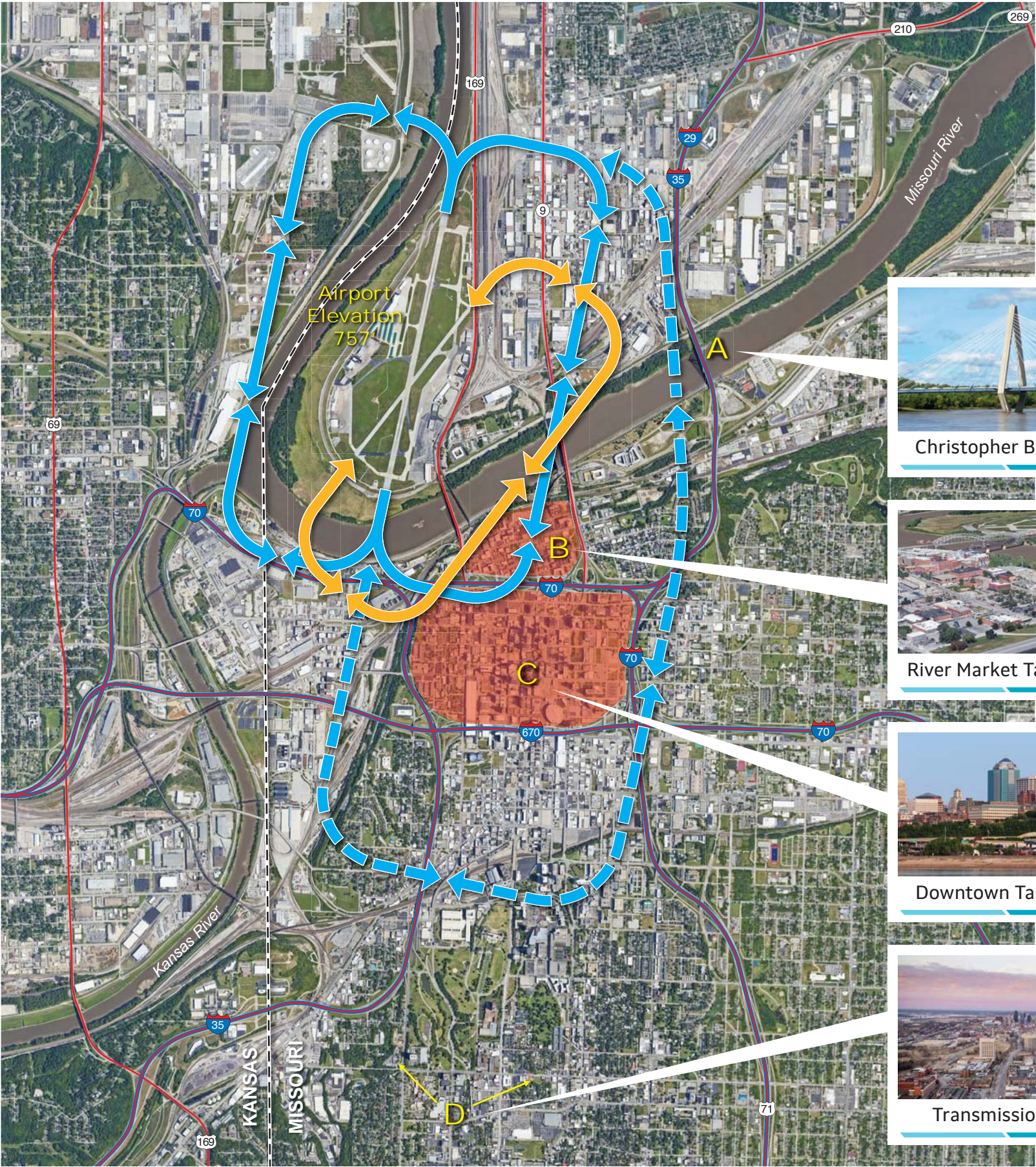
CTAF/UNICOM: 122.95 Mhz
ATIS : 120.75 Mhz
WX ASOS: 120.75 Mhz/ 816-329-2843
MKC Ground Control (24 hr.): 121.9 Mhz
MKC Tower (24 hr.): 133.3 Mhz/ 233.7 Mhz
Kansas City Approach/Departure: 118.4 Mhz
Clearance Delivery: 121.9 Mhz
Pre-Taxi Clearance: 121.9 Mhz

AIR CARRIER OPERATIONS

Airport CLOSED to air carrier operations with more than 30 passenger seats except 24 hr. PPR; Air carrier operations not authorized in excess of 15 minutes before or after scheduled arrival or departure times without prior coordination with airport manager confirming ARFF availability prior to landing or takeoff.

AIRPORT SERVICES

- Atlantic Aviation: Full service FBO – West Ramp
 - Jet A
- Signature Flight Support: Full service FBO – East Ramp
 - Jet A and 100LL
- Self-Serve 100LL – West Ramp



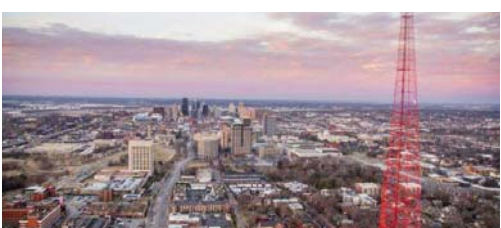
Christopher Bond Bridge - **1,038'**



River Market Tall Buildings - **1,100'**



Downtown Tall Buildings - **1,510'**



Transmission Towers - **2,049'**